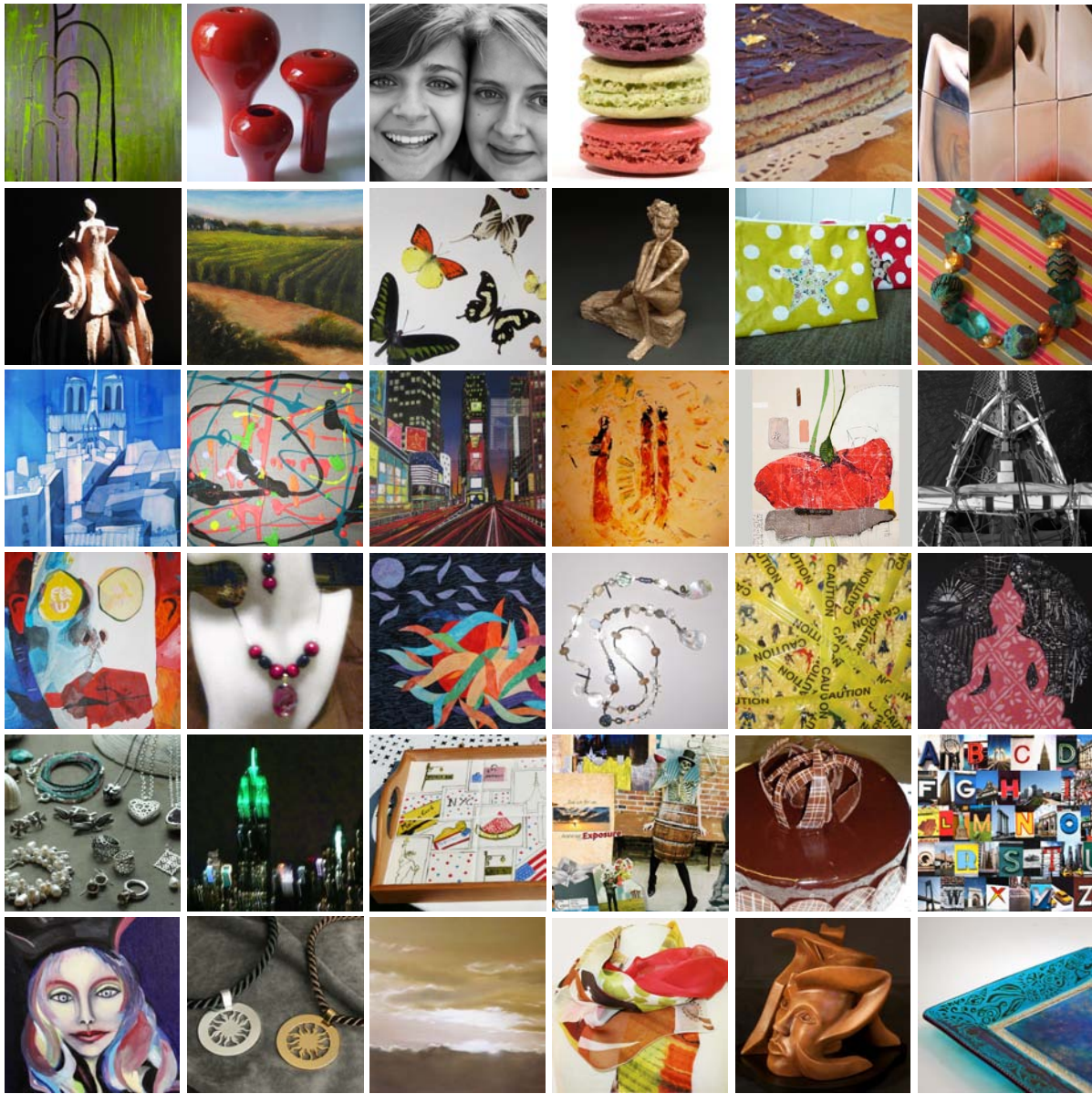


2010



Friday April 30, 10am to 3pm
 Saturday May 1, 11am to 6pm

Stroll through Larchmont Village to discover 40 artists • Free Admission

The French association Westchester Accueil welcomes you to the 10th edition of the "Promenade des artistes".

Stroll through and discover the art and craft works of 40 artists from the French Community, displayed in several private houses in Larchmont Village.

15% of sale proceeds will go to Abraham's House and Entraide Française.

The Art Walk starts at 25 Summit Avenue, Larchmont, NY 10538, where a detailed map of the walk will be available (a copy is also on our website).

Directions from Manhattan:

- by car, I-95, Exit 17 Larchmont
- by train, Grand Central Station, Metro North Railroad "New Haven line", stop at "Larchmont Station" (around 30 mn), a few minutes by foot from the station.

www.promenadedesartistes.org

Promenade des artistes



Art Walk

